



Uical

X

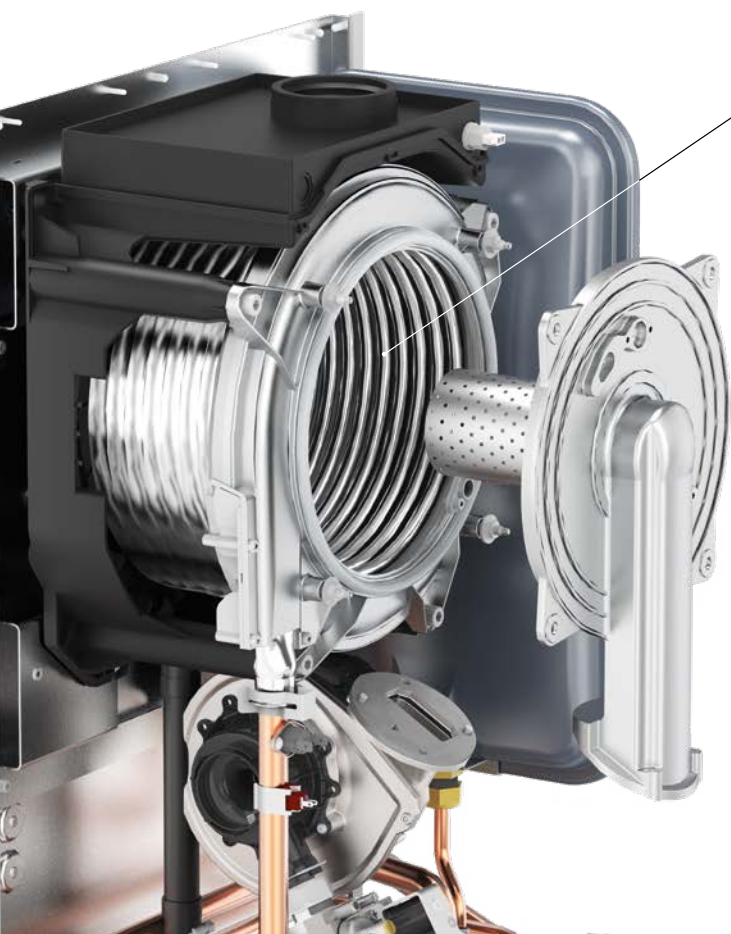


X as INOX, as the exchanger that constitutes the engine of this wall hung condensing boiler.

X is available in combi instantaneous version (up to 18,2 l/min), it works both with natural gas and LPG (conversion kit supplied with).

Characteristics:

- **Low NOx Premix burner (class 6)**
- **IPX5D (also for outdoor installation)**
- **Compact size and compatible with other Unical models**
(ideal for replacements)
- **Standardized template and connections** (Unical KON^m / KON^e)
- **Adjustment of minimum output** when in heating mode
- Electronic antifreeze function for **operation up to -15 °C**
- **Management of 2 heating zones** at different temperatures (high/low)
- **Electronics with HWS “Hot Water Speed” function** in order to reduce any possible delay during the production of DHW, and **automatic air vent function**
- Designed with ample space for **easy maintenance**
- **Wide range of choice of accessories** including:
 - both, modulating and on/off **control thermostats**
 - **outer temperature sensor** for managing both the boiler and one or two high/low temperature zones



STAINLESS STEEL HEAT EXCHANGER

- MONOSPIRAL OVAL SECTION
- NO WELDING
- GREATER COMBUSTION CHAMBER VOLUME
- REDUCED EMISSIONS / HIGHER EFFICIENCY
- LOWER PRESSURE LOSSES
- DEPOSITS REDUCTION
- MORE SILENT
- LONGER DURATION
- FRONT ACCESS FOR EASY MAINTENANCE

Stainless steel exchanger/condenser

10 litres expansion vessel

Low NOx premix modulating burner



D.H.W. heat exchanger

stainless steel with
braze-welded plates.

New asymmetric
technology:

- size reduction
- better efficiency

High efficiency modulating pump

Panel board

equipped with display, function selector,
temperature adjustment potentiometer
and reset button



EXT version for outdoor installation

The X boiler is standard IPX5D, with a high degree of protection as required by the regulations. For that reason with the addition of the protection top (optional), it can be outdoor installed with 60/100 coaxial exhaust system.

The following accessories complete the outdoor installation equipment:

- **Anti-freeze heater kit for condensate siphon and pipes**
- **Connections cover kit**



Accessories (optional)



EASY is a wireless modulating weekly thermostat:

- with data transmission range of approximately 30 meters
- **wireless**, for weekly/daily remote programming, via App "Total Connect Comfort Europe", from Smartphone/Tablet



A wide range of accessories to complete the system (hydraulic connections, flue ducts, etc.) is available at www.unical.eu.



RCh
Weekly thermostat with Open Therm Protocol
GWAY modulo WI-FI
(in combination with RCh) for remote control of the thermostat; via App on smartphones and tablets



SIM-CRONO P
Backlit weekly modulating remote control with Open Therm Protocol





REGOLAFACILE ON-OFF
Weekly digital chronothermostat ON /OFF



OUTER TEMPERATURE SENSOR



MODULO OT
For multi-zone heating system management

Technical data according to ErP directive		C 24	C 32
Nominal output heating / D.H.W.	kW	24 / 28	32 / 32
Nominal heat output	kW	5.3 ÷ 25.2	5.4 ÷ 33.6
Seasonal space heating energy efficiency	ηs %	93	93
Seasonal EFFICIENCY CLASS in heating mode		A	A
Useful heat output in high-temp. regime (Tr 60°C / tm 80°C)	P4 kW	23.4	31.2
Useful efficiency at nom. heat output in high-temp. regime (Tr 60°C/ Tm 80°C)	η4 %	87.8	87.7
Useful heat output at 30% of nom. heat output in low-temp. regime (Tr 30 °C)	P1 kW	7.8	10.4
Useful efficiency at 30% of nom. heat output in low-temp. regime (Tr 30 °C)	η1 %	97.9	97.8
Emissions of nitrogen oxides (NOx)	NO _x mg/kWh	45	49
NO _x Class		6	6
Annual electricity consumption	QHE GJ	73	97
Declared load profile		XL	XL
Energy efficiency in D.H.W. produc. mode	ηWH %	87	89
Daily fuel consumption	Q _{fuel} kWh	22.45	21.9
Seasonal EFFICIENCY CLASS in D.H.W. production mode		A	A
Production of D.H.W. in cont. operation with Δt 25 K (mixed)	l/min	16.2	18.2
Expansion vessel total capacity	l	10	10
Maximum production of condensate	kg/h	3.9	5.2
Heating circuit pressure. (min./max.)	bar	0.5 / 3.0	0.5 / 3.0
D.H.W. circuit pressure (min./max.)	bar	0.5 / 6.0	0.5 / 6.0
Sound pressure level LpA at nominal output (*)	dB(A)	43	46
Protection degree	IP	X5D	X5D
Net weight	kg	40	41

(*) measured in free field at 1 m distance from the appliance Pending approval for Ø 50 mm split exhaust system



find out more



- The X product complies with:
- Regulation 426/2016 (GAR) - CE marking
 - Directive 2014/30 / EU (electromagnetic compatibility)
 - Directive 2014/35 / EU (low voltage)

Unical declines any liability for the inaccuracies that may appear due to errors in transcription or printing. It also reserves the right to introduce those modifications to its products without compromising the essential characteristics of the said products.

Eq.1 - 06/2020 - cod. 00338515EN

Unical



www.unical.eu